

## PC interfaces



Product	CAN-IB200 /PCIe	USB-to-CAN V2 compact	USB-to-CAN V2 professional	USB-to-CAN FD compact	USB-to-CAN V2 embedded
PC interface	PCI express	USB	USB	USB	USB
Microcontroller	32 Bit	32 Bit	32 Bit	32 Bit	32 Bit
Fieldbus interfaces	1-4 x CAN 1-4 x LIN option 1-2 x CAN / CAN FD	1 x CAN	2 x CAN 1 x LIN (Automotive)	1 x CAN / CAN FD	1 x CAN
CAN bus interface	ISO 11898-2 opt. switchable to ISO 11898-3 ISO 11898-2	ISO 11898-2	2 x ISO 11898-2 1 x ISO 11898-3 (Automotive)	ISO 11898-2	ISO 11898-2
Galv. isolation	optional 1 kV, 1 sec.	optional	optional	1 kV, 1 sec.	1 kV, 1 sec.

## Repeaters



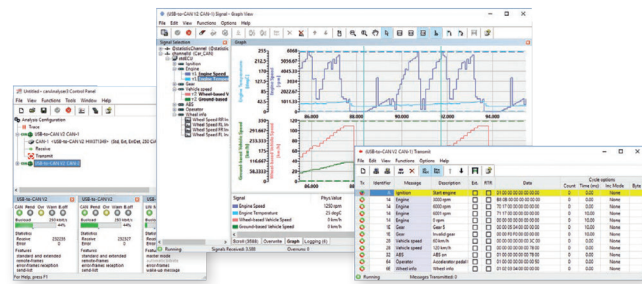
Product	CAN-CR200/220
Description	Stackable Repeater for CAN 4 kV galvanic iso. (optional)
CAN bus interface	2 x ISO 11898-2; DIN rail bus
CAN bus termination	Switchable via soldering jumpers
Galvanic isolation	CAN1 / CAN2 1 kV, 1 sec.

## Gateways



Product	CAN@net	CANbridge
Description	CAN-/CAN-FD to Ethernet Gateway and Bridge	
Application field	Expansion of networks via bridge and Ethernet as well as connection to Ethernet systems and devices	
Functionality	<ul style="list-style-type: none"> <li>- Action Rules &amp; MQTT</li> <li>- Message filtering</li> <li>- Identifier conversion</li> <li>- Baudrate conversion</li> <li>- Mapping/Multiplexing</li> </ul>	
Fieldbus interfaces	up to 4 x CAN or 2 x CAN / 2 x CAN-FD	
CAN bus interf.	4 x ISO 11898-2	
Further interfaces	10/100 MBit/s, Twisted-Pair, RJ45; USB for configuration	
Galvanic iso.	yes	

## Diagnostics



Product	canAnalyser
Description	PC based analyzing tool for CAN and LIN systems
Included functions	<ul style="list-style-type: none"> <li>- Reception, Transmission, Trace, Replay</li> <li>- Sequencer module for CAN, CAN-FD and LIN messages</li> <li>- Signal reception module</li> <li>- CANdb, FIBEX, DIM, LDF import</li> <li>- Signal/Graphic and Transmit Module for Signals</li> </ul>
Features	<ul style="list-style-type: none"> <li>- Online monitoring of bus traffic</li> <li>- Transmission of singleshot, cyclic messages and sequences</li> <li>- Creation of command controlled message sequences</li> <li>- Recording of messages with configurable trigger conditions</li> <li>- Graphical presentation of message content on the time line</li> <li>- Detection/presentation of the bus load</li> <li>- Open programming interface</li> <li>- Scripting host</li> <li>- Multi-line and multi-board operation</li> <li>- Multiple module instances</li> </ul>
Operating sys.	Windows 7 (32/64 bit) / Windows 8 (32/64 bit) / Windows 10 (32/64 bit)